

IMPORTANT INFORMATION

SAFETY & RESPONSIBILITY

The operator of any tools should be skilled and familiar with the correct use of each tool. Proper safety gear must always be worn. It is the responsibility of the installer to ensure local building code(s) are followed. If uncertain, they should consult a local official.

RECOMMENDED TOOLS:

Miter Saw	and/or	Circular Saw	and/or	Table Saw
Finishing Blade		Drill w/ #2 Square Drill Bits		Rubber Mallet
Measuring Tape		Pencil/Marker		Level
Caulking Gun		Construction Adhesive		2P-10 Adhesive
(Needle Nose) Pliers		Utility Knife		Fine Sandpaper
Safety Glasses		Earplugs		Dust Mask

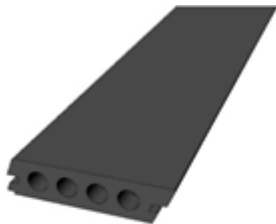
PRODUCT COLORING:

One of the great things about LANAI Premium Plank Decking is the beautiful variation in color tones in each *Deck Plank* and between different *Deck Planks*. It is very important to open as many bundles as possible and lay the *Deck Planks* out ensure the varying colors are evenly distributed to achieve the desired look. It is also important to note that the all *Deck Planks* should be used only with the grain (rough) side up. The bottom edge is very smooth and shiny and could be dangerous when wet.

CUTTING:

All cuts should be done very slowly and with a finishing or diamond. blade. The number of teeth will depend on the size of the blade.

PRODUCTS:



DECK PLANK
(48"x4"x1")



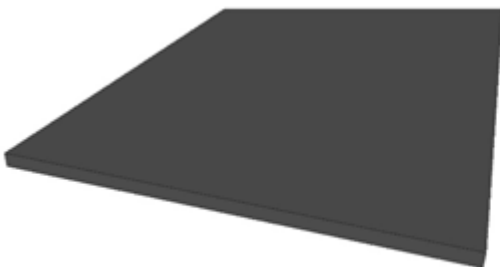
NARROW PLANK
(48"x2"x1")



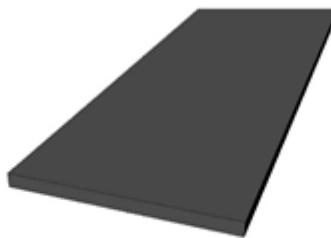
DECK NOSING
(48"x3"x1")



HIDDEN NOSING
FASTENER



DECK FASCIA
(48"x12"x1/4")



DECK RISER
(48"x7.25"x1/4")



HIDDEN PLANK
FASTENER



(FIT) FIRST-ROW
INSTALL TOOL

For more information, please visit our website or contact us:

www.LANAIoutdoors.com * Toll Free at 1-877-477-4373 * Email at hello@lanaioutdoors.com

BEFORE YOU START

INSTALL TEMPERATURES:

PVC decking will expand a small amount at high temperatures. It is recommended wherever possible to install during cooler temperatures and to keep product shaded or in a cool spot until it is ready to be installed. If product is installed while hot (expanded) it can later go back (contract) to its former size which can leave a gap.

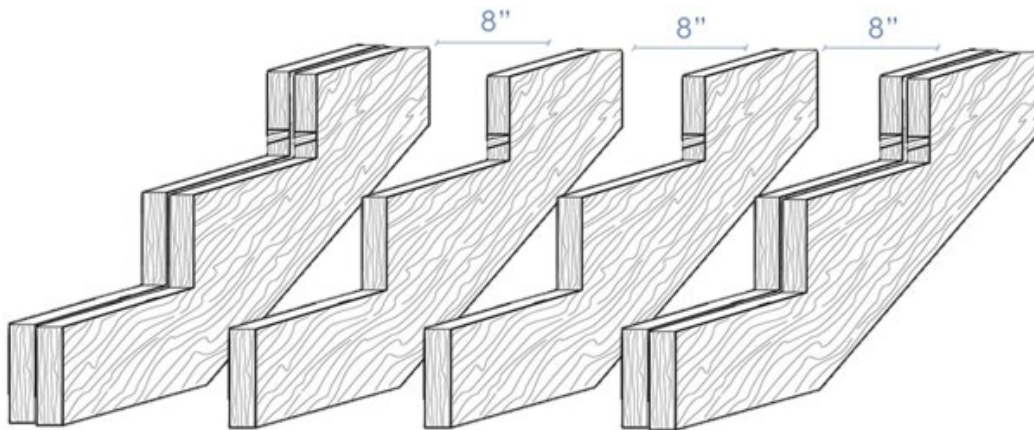
NOTE:

Construction methods are always improving, and code is subject to change. Please go to lanaioutdoors.com for the most up-to-date Installation Instructions, and please ensure you are following updated code regulations.

DECK & STAIR FRAMING

It is important to locate and follow standard deck framing methods that adhere to your local building codes.

LANAI Premium Plank Decking requires a doubled rim joist around the perimeter, including stairs. This is needed for the installation of the *Hidden Nosing Fasteners* and *Deck Nosing*, which are the starting point of the deck and stair installation. If you are going with this framing route, you can use our standard deck Installation Instructions.



The second option is using pre-built or site-built stringers. These instructions use pre-built Stair Stringers, 10" tread with 6 13/16" riser. The two outsides need double stringers to allow for the *Deck Nosing* to be installed.

The other option is using single stringer with 2x4 or 2x6 attached for support. All stringers should be framed a maximum of 8" apart.

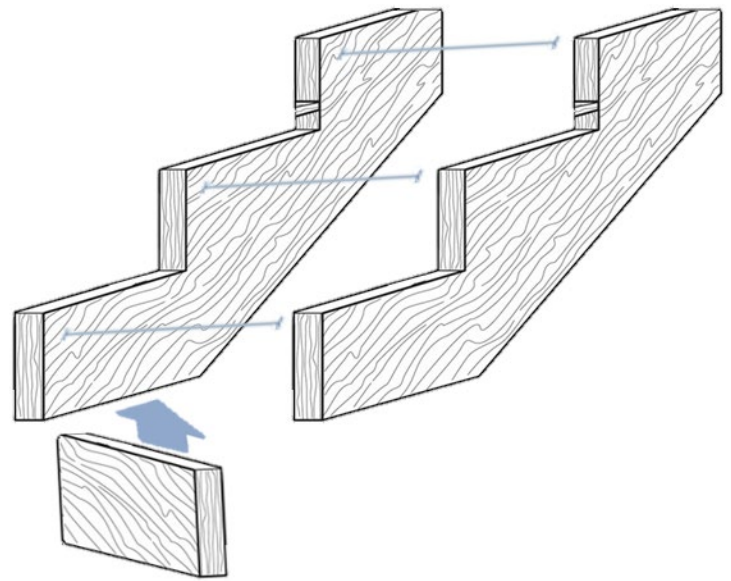
Please check your local building code to ensure your stair measurements will meet code.

For more information, please visit our website or contact us:

www.LANAIoutdoors.com * Toll Free at 1-877-477-4373 * Email at hello@lanaioutdoors.com

DECK & STAIR FRAMING CONT'D

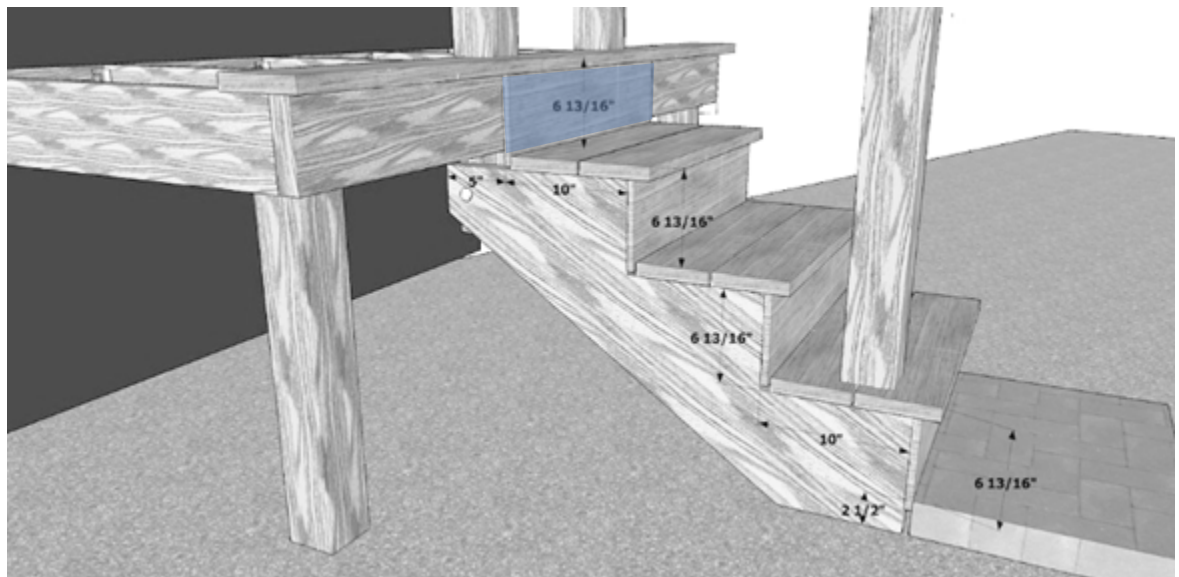
Next, install 'blocking' (typically 2x4 or 2x6) in between the front riser of each stringer. This will support the front *Deck Nosing* on each step.



PRO TIP Blocking is always a good idea as it also serves other functions of giving even more support to the structure of the steps, as well as backing to the *Deck Risers*.

DECK RISER INSTALLATION

We recommend installing the *Deck Riser* prior to installing the *Deck Planks* for the stair treads. *Deck Riser* installation is very much the same as *Deck Fascia*. It is important to note that *Deck Fascia* can easily be cut and used as *Deck Risers* if that is all you have. Measure the distance across the step, measure and mark the *Deck Riser*, then cut to that length. Next measure the riser height on the stringer, measure and mark, then cut to that height (if necessary).

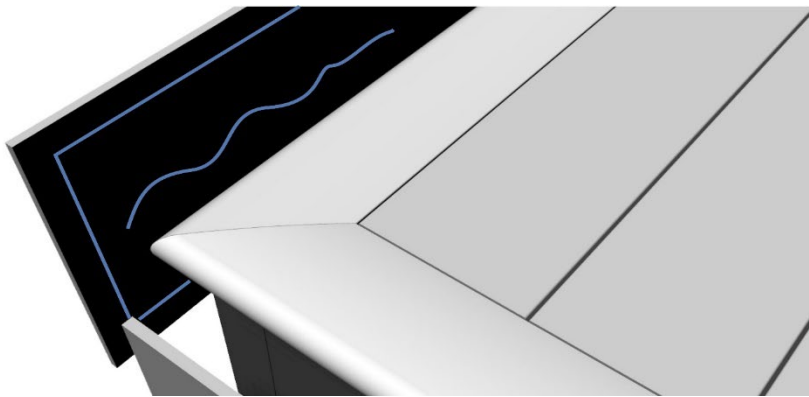
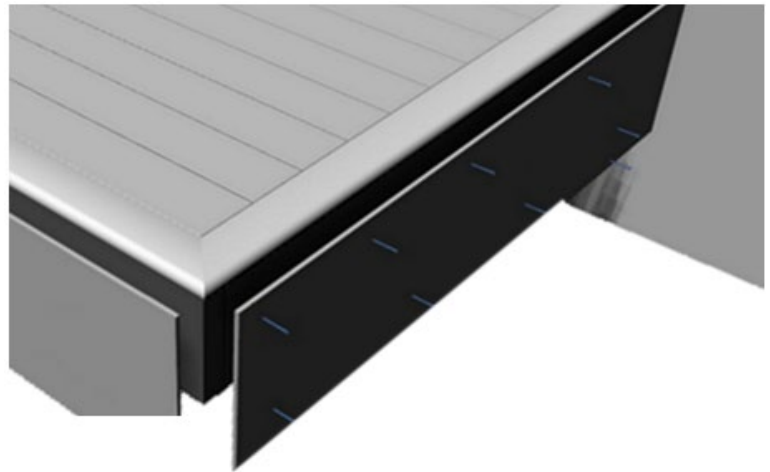


For more information, please visit our website or contact us:

www.LANAIoutdoors.com * Toll Free at 1-877-477-4373 * Email at hello@lanaioutdoors.com

Now fasten the *Deck Riser* using one of two methods:.

If using screw, place them in the four corners as well as every 8-12 inches along the top and bottom.



If using adhesive, apply a frame bead around the entire perimeter about 1" in from the edge. Then draw a serpentine pattern within that frame.

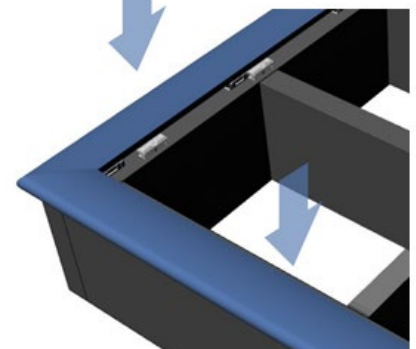
PRO TIP We recommend a strong heavy-duty construction adhesive or a PVC specific adhesive like Titebond PVC TRIM Adhesive and Sealant.

STAIR TREAD INSTALLATION

Just like with the main portion of the deck, it is important to install the front and side *Deck Nosings* prior to installing the *Deck Planks*.

Follow the standard installation instructions for installing the *Deck Nosings*. You can never have too many Nosing Fasteners, so you can double or triple the number used for high-traffic areas.

SECURE FIRMLY
INTO PLACE



For more information, please visit our website or contact us:

www.LANAIoutdoors.com * Toll Free at 1-877-477-4373 * Email at hello@lanaioutdoors.com



Once the *Deck Nosings* are installed, measure the distance of the space needed to be filled (step width).

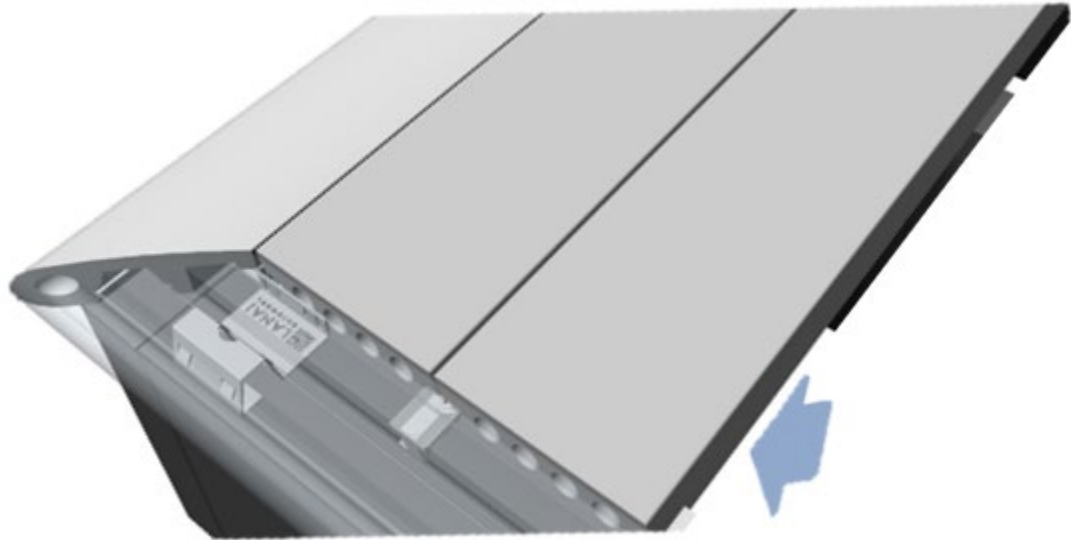
Next measure, cut, and install a *Deck Plank* against the front *Deck Nosing* as per the standard installation instructions.

To install the second *Deck Plank*, first measure, cut, and install a *Deck Plank* to the proper length.

Next measure the distance between the first *Deck Plank* and the installed *Deck Riser*.

Now measure, mark, and cut a *Deck Plank* to that width.

The front of *Deck Plank* will lock into the *Hidden Plank Fasteners* but the back will need to be fastened using adhesive.



PRO TIP We recommend a strong heavy-duty construction adhesive or a PVC specific adhesive like Titebond PVC TRIM Adhesive and Sealant.

Once the first step is complete, repeat the above instructions for all remaining steps.

DISCLAIMER:

LANAI OUTDOORS INC. (LANAI) does not install or have any control over how product is installed, therefore these Instructions are to be used as only as guidelines. LANAI assumes no liability for improper installation or personal injury resulting from prope

For more information, please visit our website or contact us:

www.LANAIoutdoors.com * Toll Free at 1-877-477-4373 * Email at hello@lanaioutdoors.com